



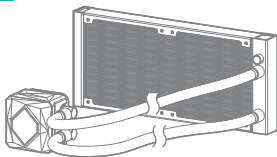
IceFLOE® OASIS

Quick Start Guide

Iceberg-Thermal.com

Package Content

240

A

x1

B

x2

C

x8

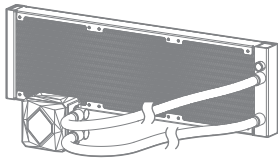
D

x8

E

x1

360

A

x1

B

x3

C

x12

D

x12

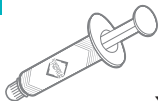
E

x1

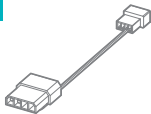
Package Content

F

x 4

G

x 1

H

x 1

INTEL

ILGA 1851/
LGA 1700

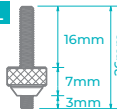
x 1

JLGA 1200/
LGA 115X

x 1

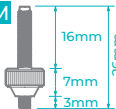
K

x 1

L

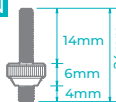
LGA 1700

x 4

M

1200/115X

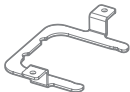
x 4

N

LGA 20XX

x 4

AMD

O

x 1

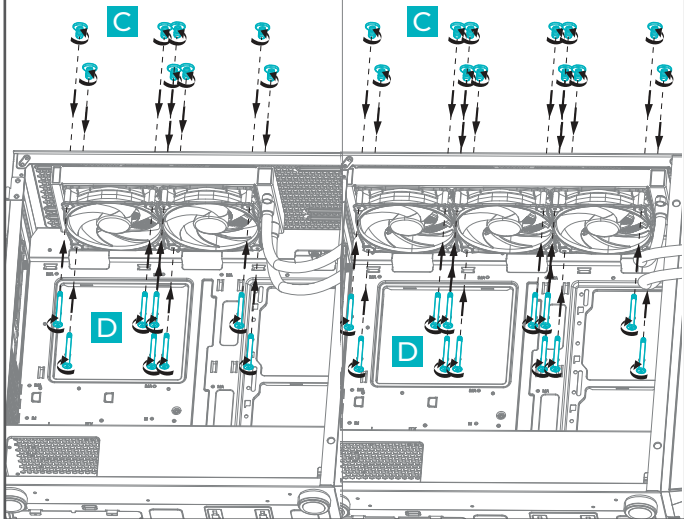
P

x 2

Fan & Radiator Installation

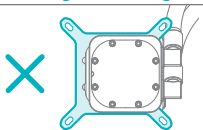
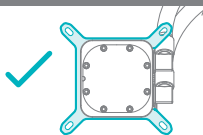
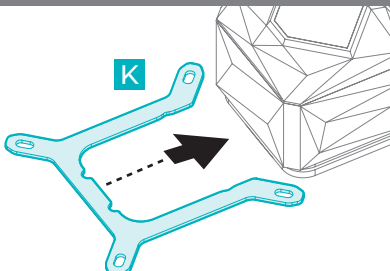
240

360

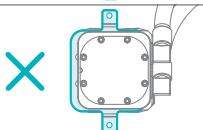
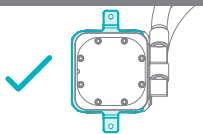
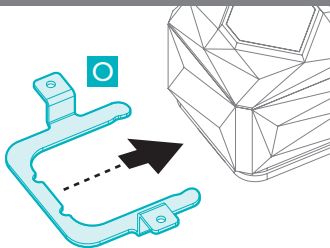


Bracket Installation

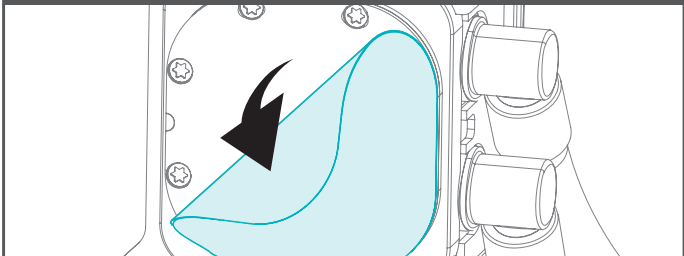
INTEL



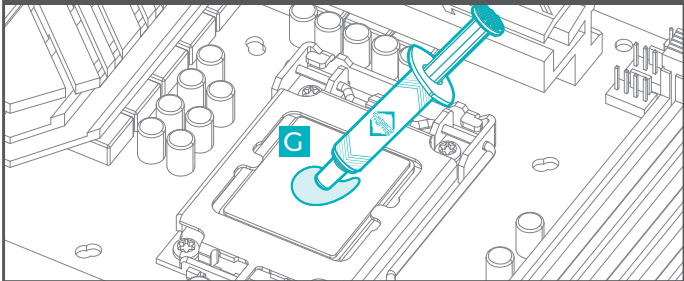
AMD



Remove Protection Film

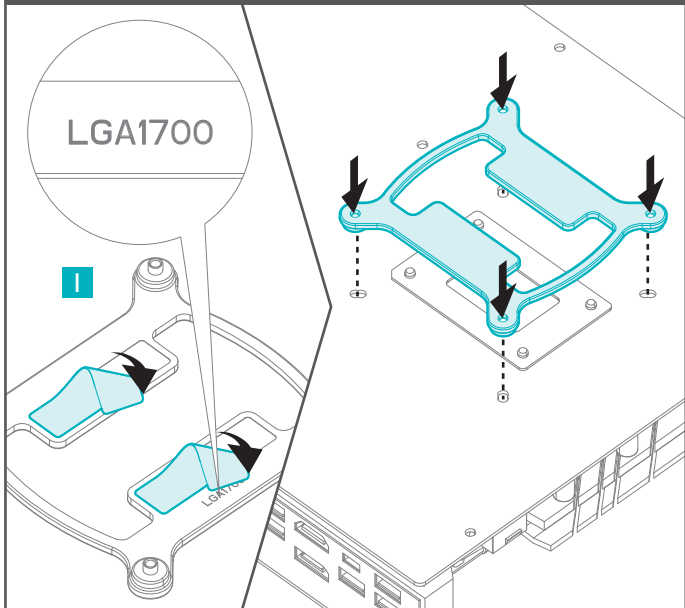


Apply Thermal Grease



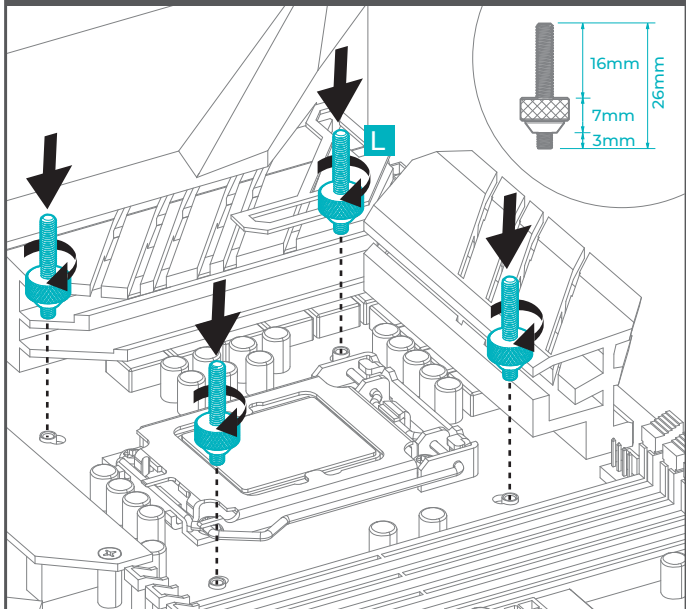
INTEL

LGA 1851 / 1700



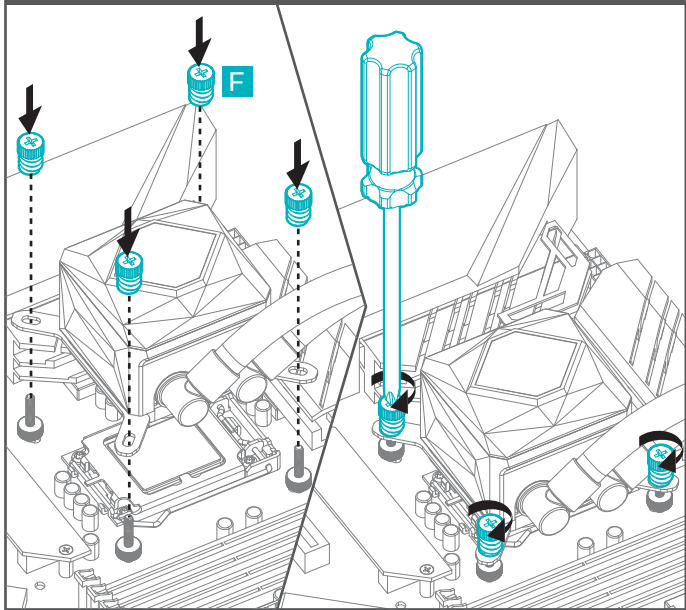
INTEL

LGA 1851 / 1700



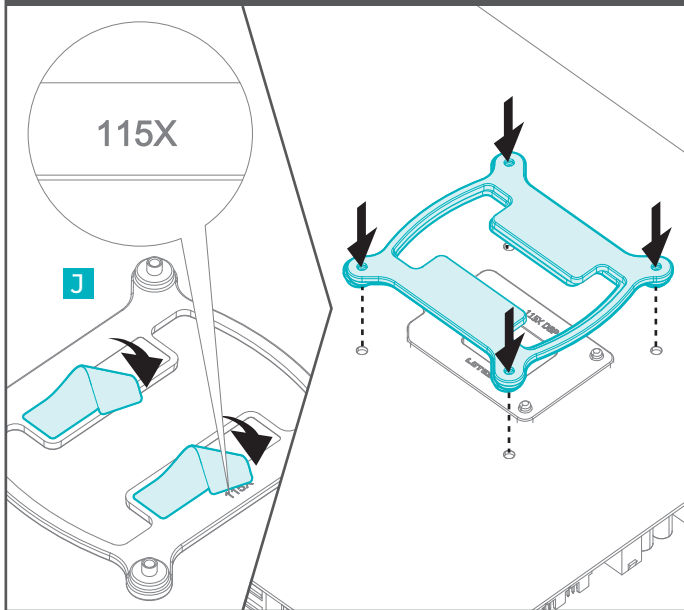
INTEL

LGA 1851 / 1700



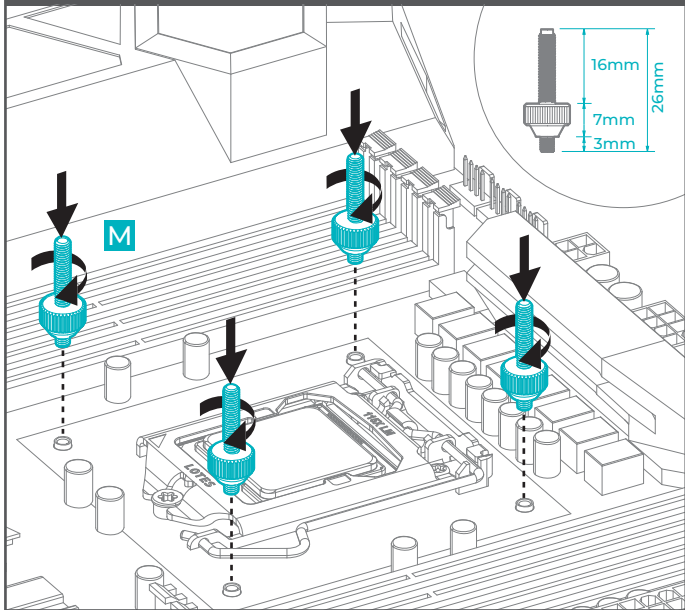
INTEL

LGA 1200 / 115X



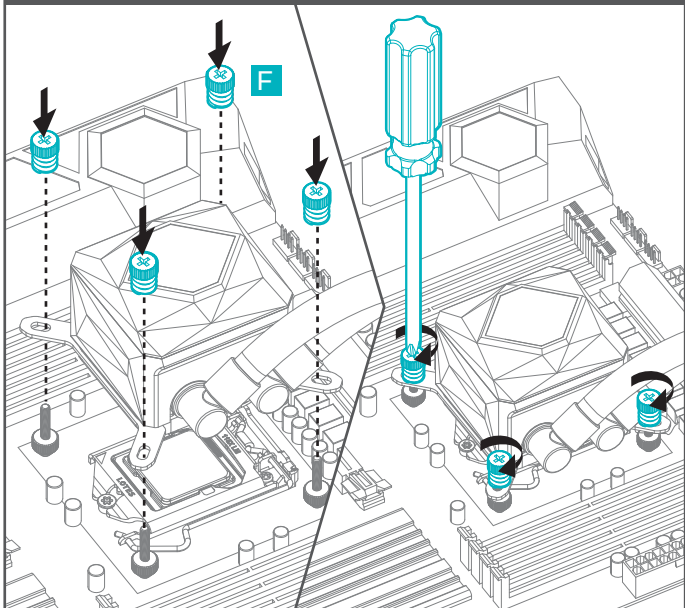
INTEL

LGA 1200 / 115X



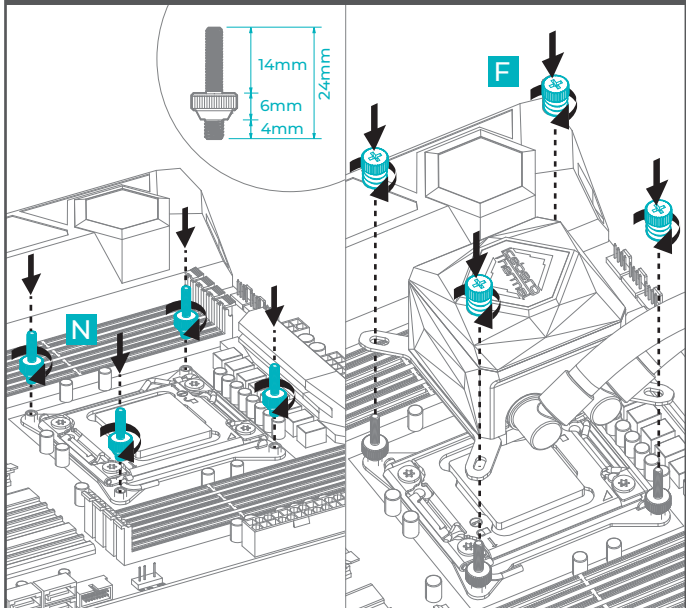
INTEL

LGA 1200 / 115X



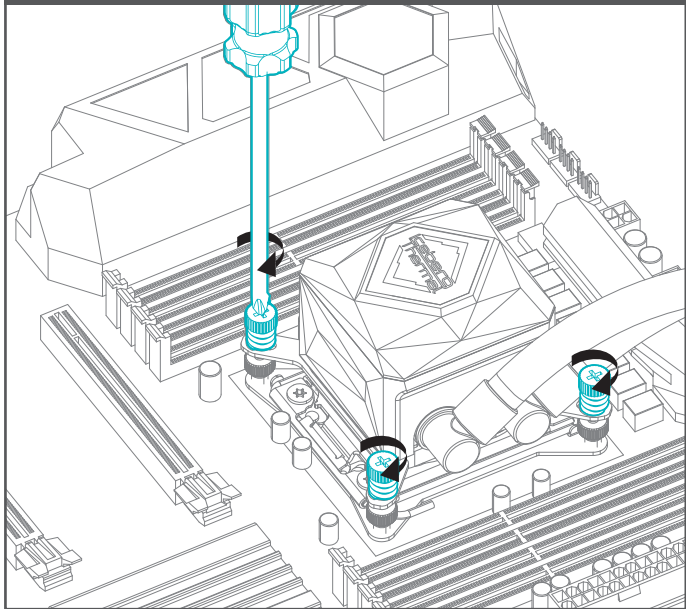
INTEL

LGA 20XX



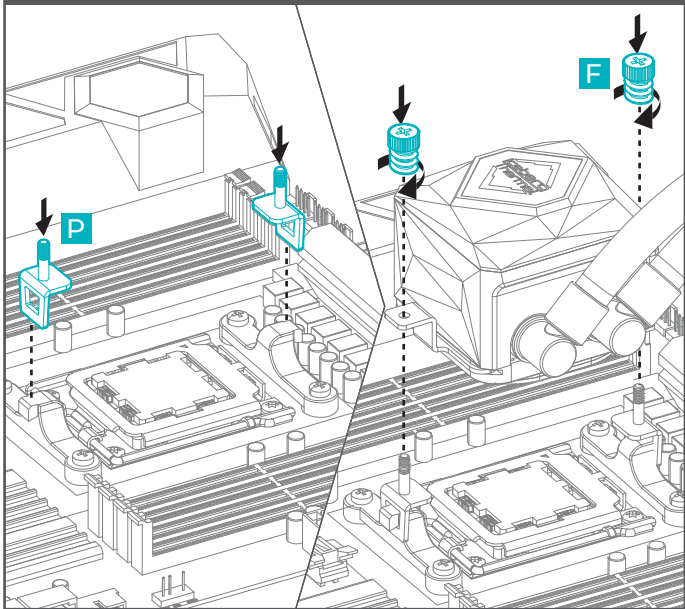
INTEL

LGA 20XX



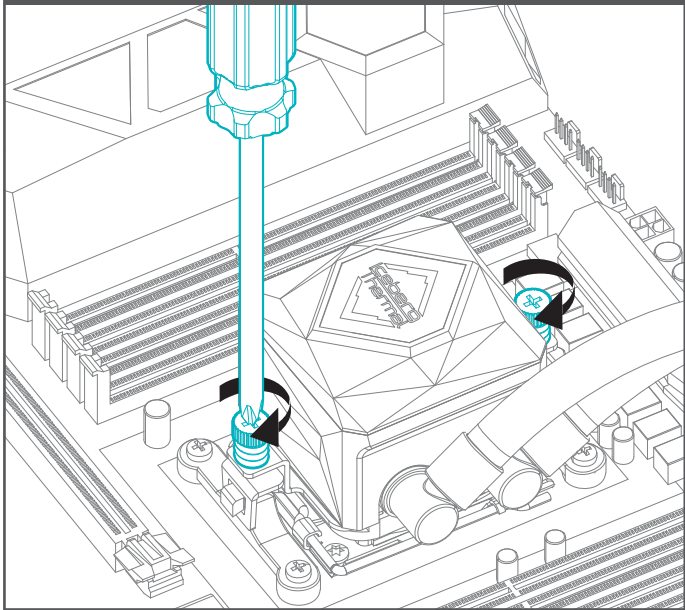
AMD

AM5



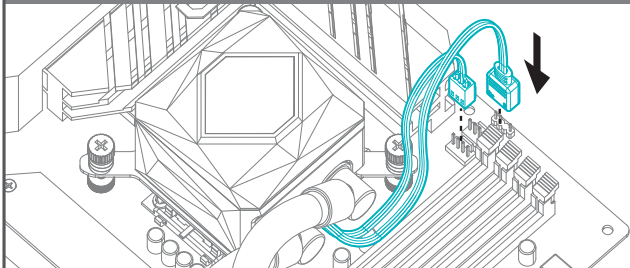
AMD

AM5

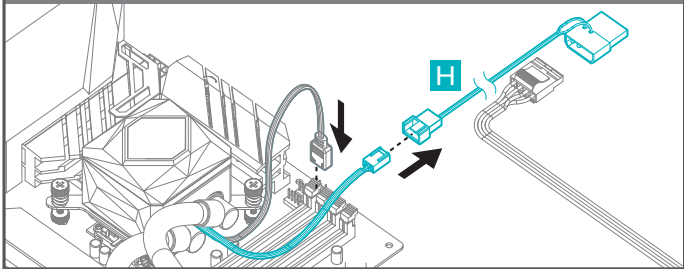


Cable Connection

Power by Motherboard

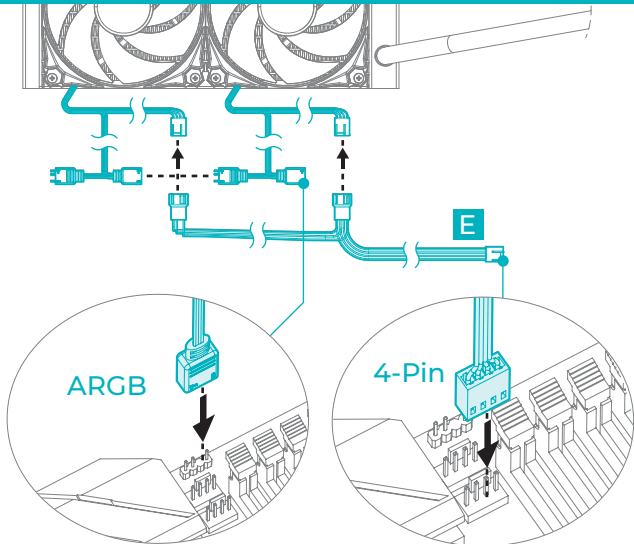


Power by PSU (Optional)



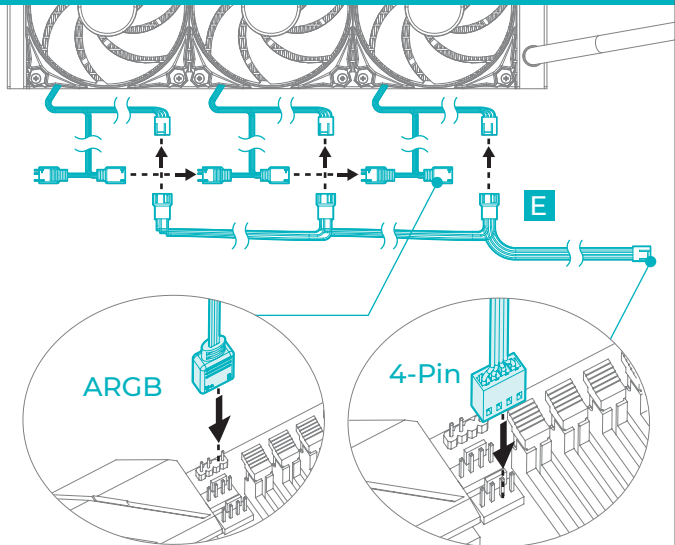
Cable Connection

240



Cable Connection

360



Logo Rotation

